

# Major or Minor?

## Identifying triads on the staff

There are 2 ways of identifying triads on the staff.

### Counting half steps.

This is a time consuming way, but is reliable if you count carefully!

A major chord has a perfect 5<sup>th</sup>  
and a major 3<sup>rd</sup>.

A minor chord has a perfect 5<sup>th</sup>  
and a minor 3<sup>rd</sup>.

Perfect 5<sup>th</sup>- 7 half steps  
Major 3<sup>rd</sup>- 4 half steps

Perfect 5<sup>th</sup>- 7 half steps  
Minor 3<sup>rd</sup>- 3 half steps



### Memorizing the “white key intervals.”

This will save you lots of time!

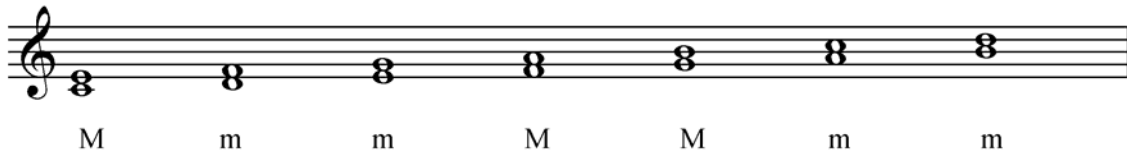
#### 5ths

All of the white key 5ths are Perfect except for the one on B, which is diminished. To make it perfect, you would have to make it bigger by adding an F<sup>#</sup> or a B<sup>b</sup>.



#### 3rds

All of the white key 3rds are minor except the ones on C, F, and G.



For example, based on the chart above, we know that from F to A is a M3. Therefore, if we make the interval smaller by using an A<sup>b</sup>, we know that it is a m3.



Try memorizing this little chant to help you remember:

“Major 3rds sound good to me,  
They are found on C, F, G.”

 Let's use the "white key interval" method to identify these triads on the staff.

①



- Check the 5<sup>th</sup>. According to the chart, it is perfect!
- Check the 3<sup>rd</sup>. According to the chart, the 3<sup>rd</sup> that is on D (without an accidental) is minor. So if we raise the top note ½ step, it is now major!

**Therefore, the triad is major!**

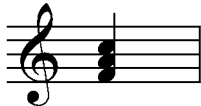
②



- Check the 5<sup>th</sup>. According to the chart, it is perfect!
- Check the 3<sup>rd</sup>. According to the chart, the 3<sup>rd</sup> that is on G (without an accidental) is major. So if we lower the top note ½ step, it is now minor!

**Therefore, the triad is minor!**

③



- Check the 5<sup>th</sup>. According to the chart, it is perfect!
- Check the 3<sup>rd</sup>. According to the chart, the 3<sup>rd</sup> that is on F (without an accidental) is major.

**Therefore, the triad is major!**

# Major or Minor?

## Identifying triads on the staff

Name: \_\_\_\_\_

Use the "white key interval" method to identify these triads.



C major

