

Major, Minor, Augmented, and Diminished Chords

To build these chords, you need to know what kind of a 5th and what kind of a 3rd each chord uses:

CHORD	5 th	3 rd
Major	Perfect	Major
Augmented	Augmented	Major
Minor	Perfect	Minor
Diminished	Diminished	Minor

5ths

DIMINISHED (lower top) ← PERFECT → AUGMENTED (raise top)

Perfect:

All of the white key 5ths are perfect except the one on B, which needs an F# to make it perfect.

Augmented:

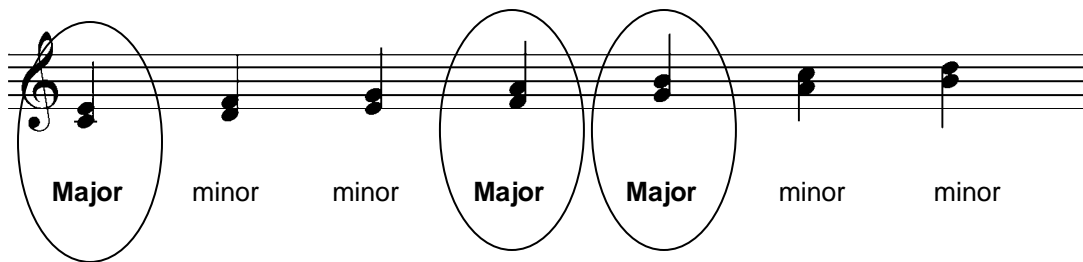
To make a Perfect 5th Augmented, just raise the top note ½ step.

Diminished:

To make a Perfect 5th Diminished, just lower the top note ½ step.

3rds

The white key 3rds on C F and G are Major. The other white key 3rds are minor. Remember, "Major thirds sound good to me. They are found on C, F, G."



Drawing Augmented Triads

(Remember an Augmented chord starts with a Major Triad and Augments the 5th)

Instructions: Draw a D Aug. chord.

To draw an Augmented Triad,

1. Draw a D Major Chord:



2. Augment (raise the 5th of) the chord:



Drawing Diminished Triads

(Remember a Diminished chord starts with a minor triad and diminishes the 5th)

Instructions: Draw a D diminished chord.

1. Draw a minor chord



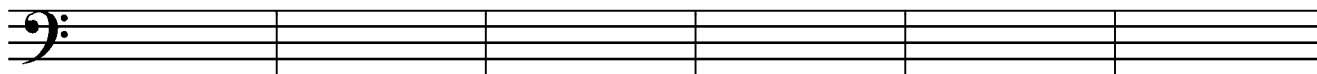
2. Diminish (lower the 5th of the chord)



Drawing Chords

Name: _____

Draw the following root position chords on the staff:



E Major

F dim.

C Aug.

E^b Aug.

F[#] minor

B dim.



C[#] Major

G minor

E dim.

B Aug.

B^b Major

F dim.