

Drawing Triads on the Staff

To draw a Major or minor triad on the staff, you must first learn to draw Perfect 5ths and learn to draw Major and minor 3rds.

DRAWING PERFECT 5ths

All of the 5ths built on *white* keys are Perfect except for the one built on B. You must add a sharp to the F to make it a perfect 5th.

In order to be perfect, the 5th on B requires making the F an F#.



All of the 5ths on black keys are Perfect except for the one built on B^b.

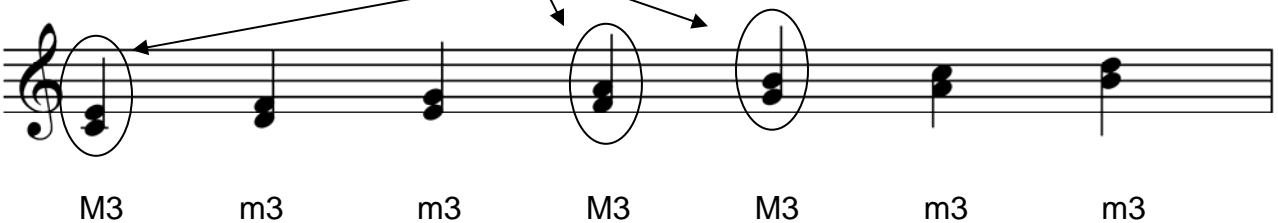
In order to be perfect, the 5th on B requires an F natural.



DRAWING 3rds

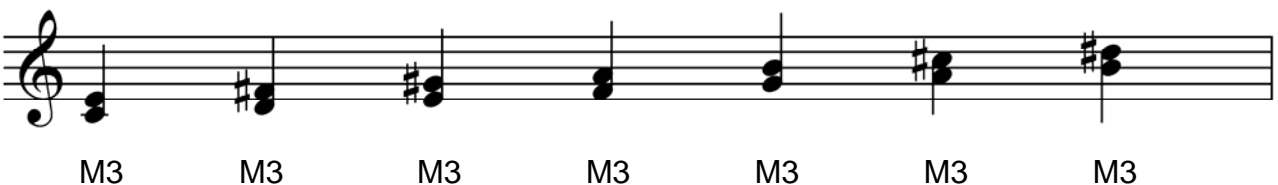
Only 3 of the 3rds built on white keys are Major. The Major White Key 3rds are C F G. To remember this, memorize this jingle:

"Major thirds sound good to me,
They are found on C F G."



DRAWING MAJOR 3rds

To make the minor 3rds Major, add a sharp to the top note.



DRAWING MINOR 3rds

To make the Major 3rds minor, add a flat to the top note.



DRAWING TRIADS

To draw a triad, first draw a Perfect 5th, then draw your Major or minor 3rd.

To draw a D Major chord, first draw the Perfect 5th.



Then Draw a Major 3rd. You know that the white key 3rd on D is normally a minor 3rd, so you will have to add a sharp to make it a Major 3rd.



No accidentals on
the D 3rd means it
is **minor**.



Add a sharp to
make it **Major**.

=

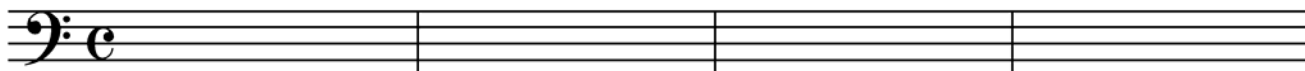


D MAJOR

Drawing Triads on the Staff

Name: _____

Draw the triad indicated on the staff. Make sure you check the 5th to make sure it is perfect, and the 3rd to make sure it is Major or minor.

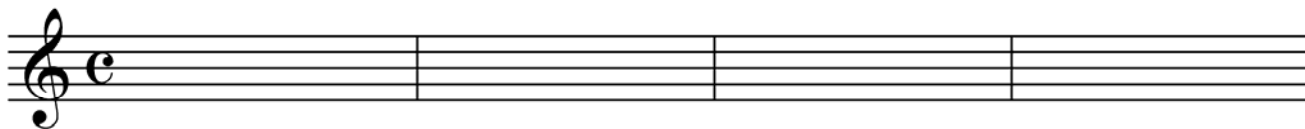


F Major

E Major

C[#] minor

D minor



A Major

E^b Major

C minor

F Major



C Major

B^b Major

E Major

G^b Major