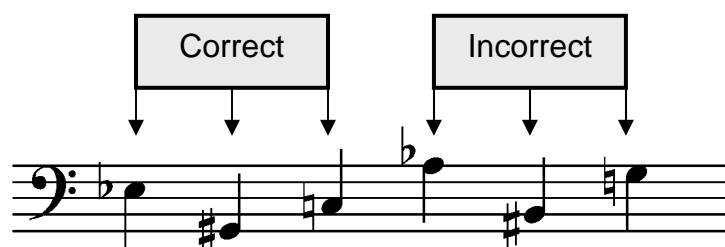


Placing Accidentals

Accidentals can be sharps, flats, or naturals. When drawing an accidental by a note, it is very important to place the middle of the accidental (or the “hole” of the accidental) on the exact line or space of the note you intend to change. An accidental must always be placed BEFORE a note, like a warning sign!



Place the accidental indicated in the correct position next to the note.

The musical staff contains eight notes. Below the staff, a list of accidentals is provided for each note: Flat, Sharp, Natural, Flat, Natural, Sharp, Sharp, Natural.